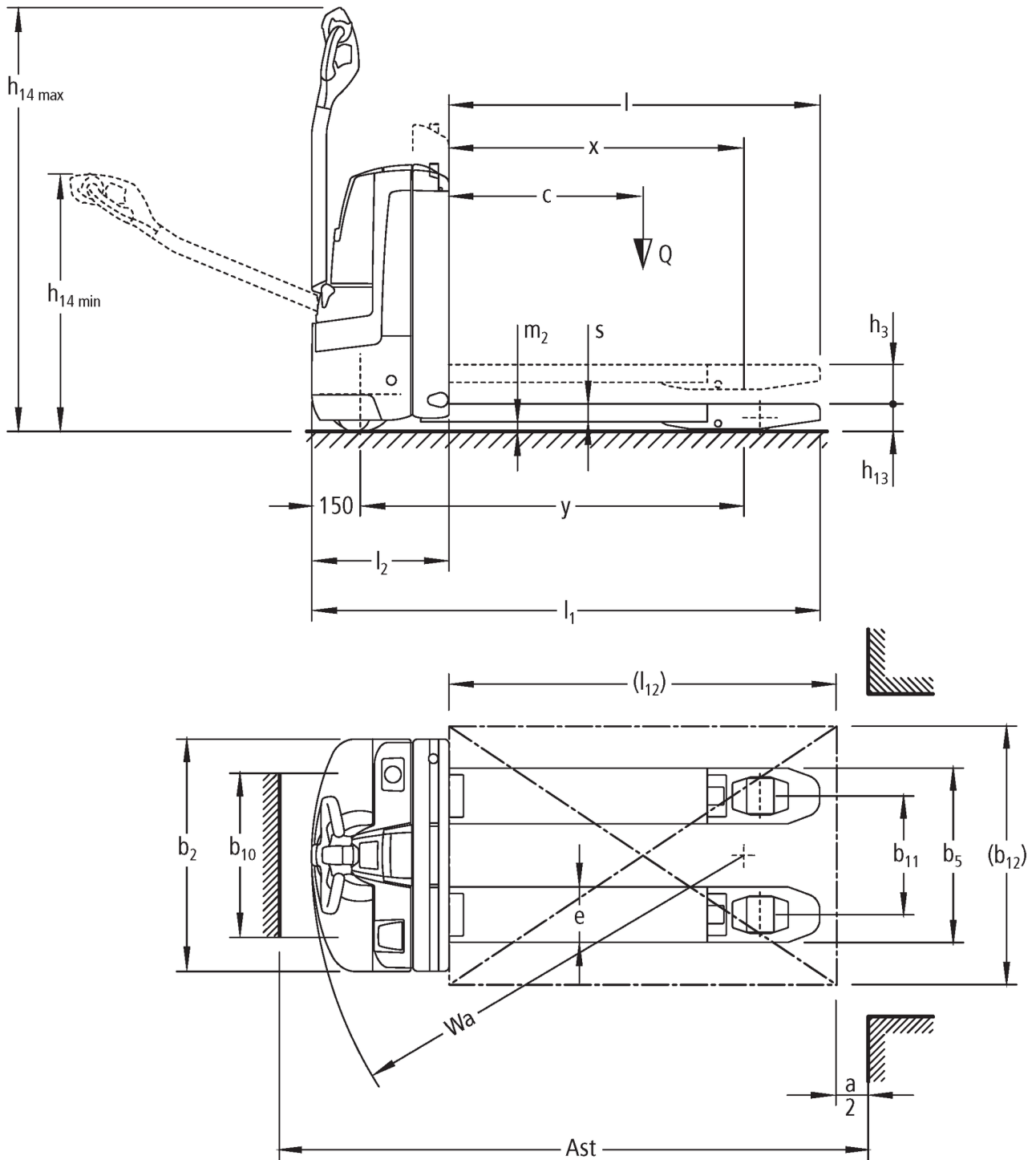




Electric pedestrian pallet truck **EJE 114i / 116i / 118i**

Lift height: 122 mm / Load capacity: 1400-1800 kg

EJE 114i / 116i / 118i



VDI table

Stand-on: 08/2021

		Jungheinrich				
Characteristic	1.1	Manufacturer (abbreviated description)				
	1.2	Manufacturer's type designation	EJE 114i	EJE 116i	EJE 118i	
	1.3	Drive	Electric			
	1.4	Operation	Pedestrian			
	1.5	Load capacity/load	Q kg	1400	1600	1800
	1.6	Load centre distance	c mm	600		
	1.8	Load distance, centre of drive axle to fork	x mm	908		
	1.9	Wheelbase	y mm	1182		
	Weights	2.1.1	Service weight (incl. battery)	kg	280	
2.2		Axle load laden front/rear	kg	560 / 1120	600 / 1280	660 / 1420
2.3		Axle load unladen front/rear	kg	220 / 60		
Wheels/suspension system	3.1	Tyres	Polyurethane			
	3.2	Tyre size, front	Ø 230 x 70			
	3.3	Tyre size, rear	Ø 80 x 90 / 80 x 70 / 80 x 35			
	3.4	Additional wheels	Ø 100 x 40			
	3.5	Wheels, number front/back (x=driven)	1x +2/2 oder 4			
	3.6	Tread width, front	b ₁₀ mm	510		
	3.7	Tread width, rear	b ₁₁ mm	363		
Basic dimensions	4.4	Lift (h ₃)	h ₃ mm	122		
	4.9	Height of tiller handle in drive position min./max.	mm	750 / 1237		
	4.15	Height, lowered	h ₁₃ mm	85		
	4.19	Overall length	l ₁ mm	1566		
	4.20	Length including fork shank	l ₂ mm	416		
	4.21.1	Overall width	b ₁ mm	720		
	4.22	Fork dimensions	s/e/l mm	55 x 150 x 1150		
	4.25	Width across forks	b ₅ mm	513		
	4.32	Ground clearance centre of wheelbase	m ₂ mm	30		
	4.34	Aisle width (pallet 1000x1200 sideways)	Ast mm	2170		
	4.34.1	Aisle width (pallet 800x1200 length)	Ast mm	2058		
4.35	Turning radius	W _a mm	1363			
Performance data	5.1	Travel speed laden/unladen	km/h	5 / 5	6 / 6	
	5.2	Lift speed laden/unladen	m/s	0.03 / 0.03	0.04 / 0.04	
	5.3	Lowering speed laden/unladen	m/s	0.05 / 0.04		
	5.8	Max. gradeability laden/unladen	%	8 / 20		6 / 20
	5.10	Service brake		generative		
E-motor/Electronics	6.1	Drive motor, performance S2 60 min	kW	0.9	1.1	
	6.2	Lift motor, performance with S3	kW	1.2		
	6.3	Battery according to DIN 43531/35/36		B		
	6.4	Battery voltage/nominal capacity	V / Ah	25.7 / 40		
	6.5	Battery weight	kg	15		
	6.6.1	Energy consumption according to EN cycle	kWh/h	0.32	0.31	0.29
	6.6.2	CO2 equivalent as per EN 16796	kg/h	0.2		
	6.7	Throughput	t/h	67	93	110
6.8.1	Energy consumption with max. throughput	kWh/h	0.49	0.66	0.59	

Other	8.1	Type of drive control		AC
	10.7	Sound level as per EN12053, operator's ear	dB (A)	61

- This data sheet according to VDI guideline 2198 only states the technical values of the standard truck. Different tyres, other masts, additional equipment etc. may result in different values.

The German production facilities in
Norderstedt, Moosburg and Landsberg
are certified.

ISO 9001
ISO 14001

Jungheinrich fork lift trucks meet
European safety requirements.



 **JUNGHEINRICH**