

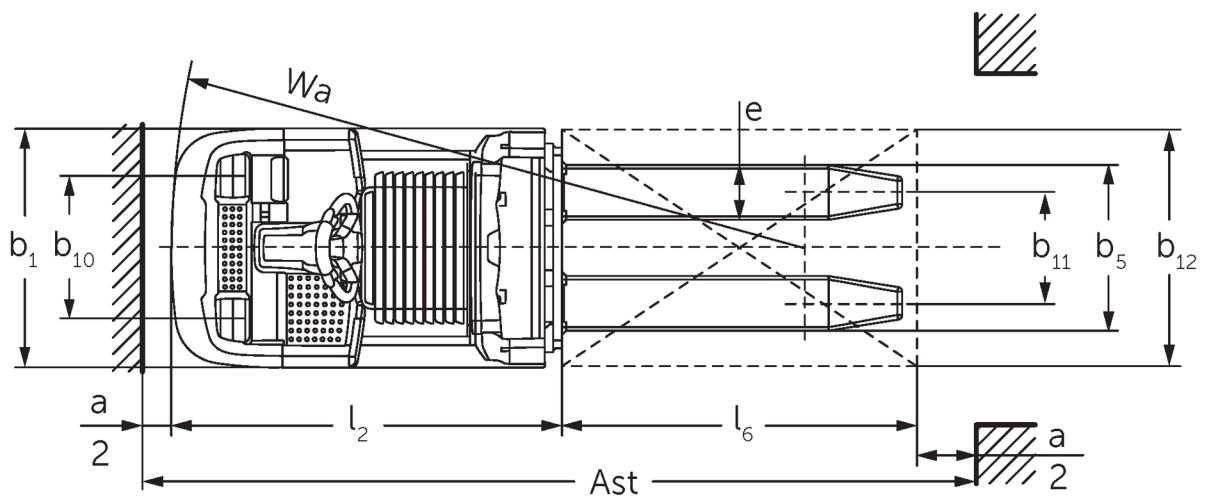
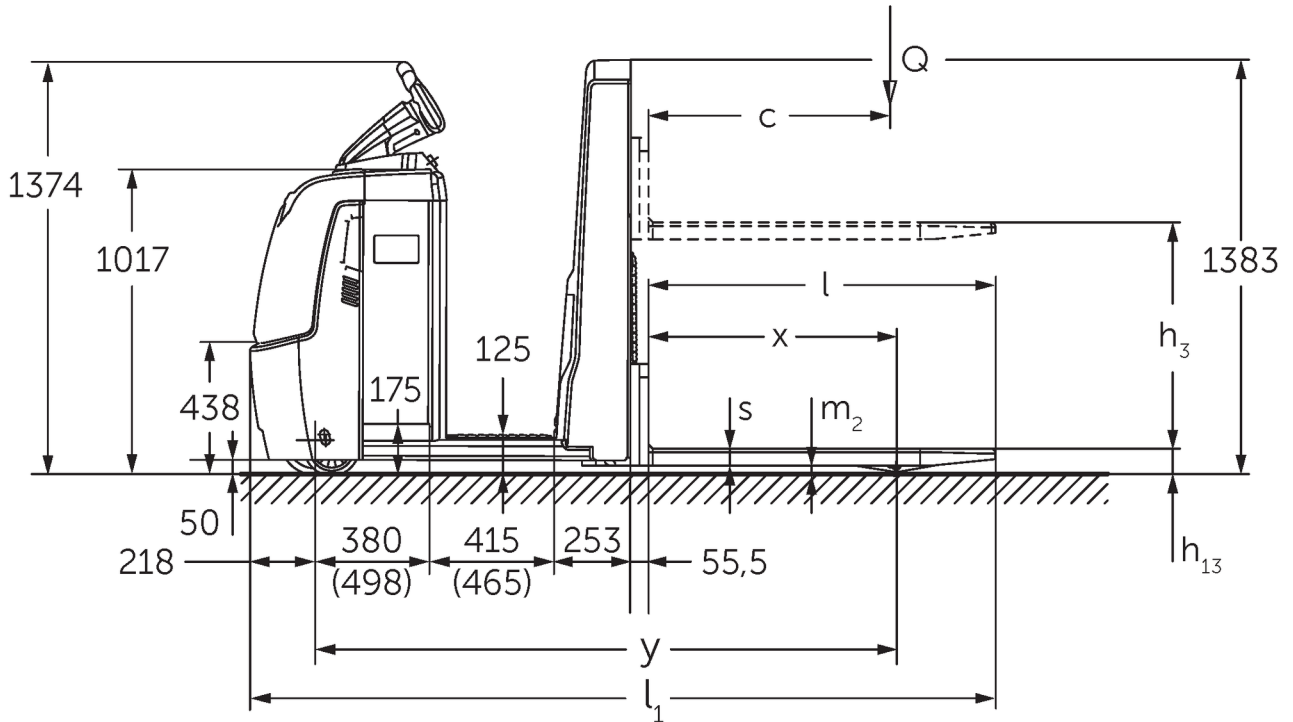


Low level order pickers

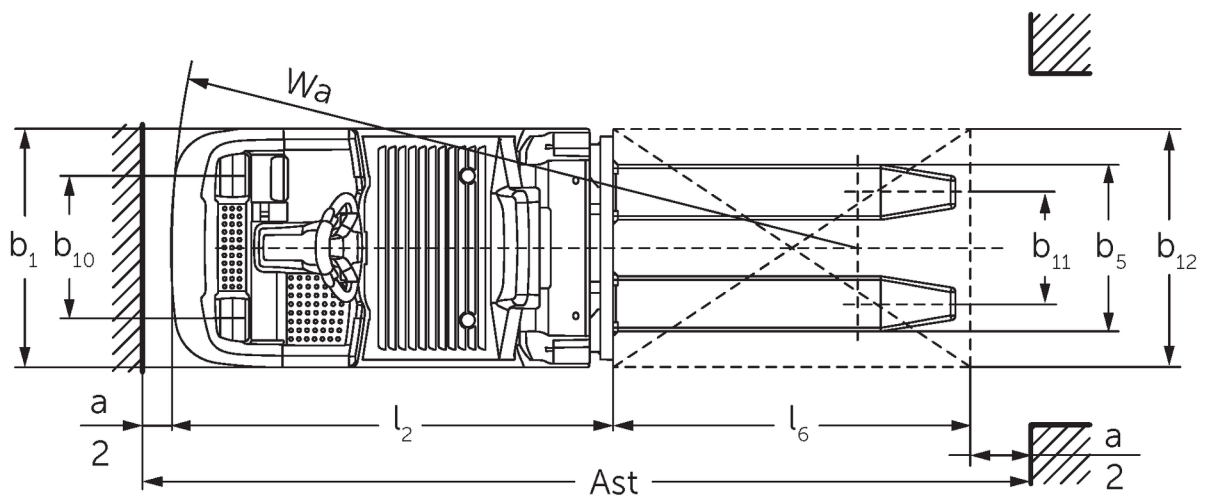
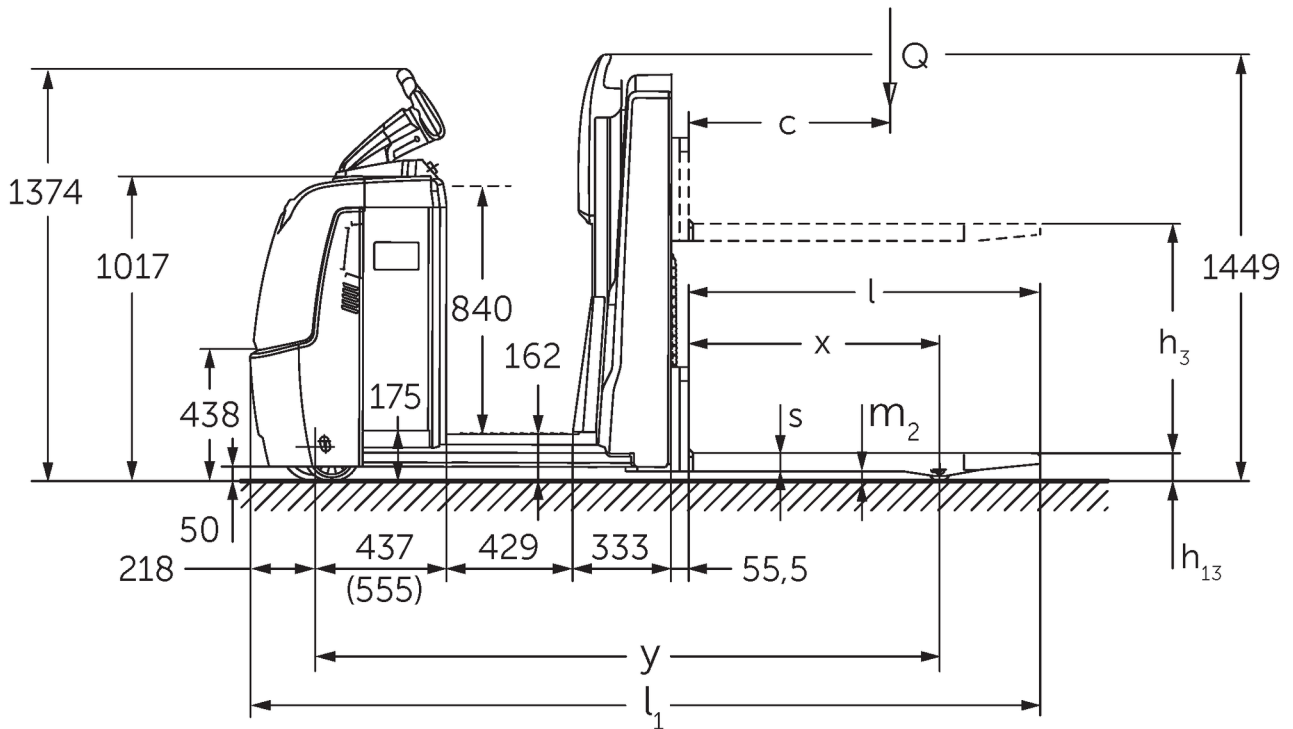
ECE 310

Lift height: 750 mm / Load capacity: 1000 kg

ECE 310



ECE 310



VDI table

Stand-on: 10/2020

		Jungheinrich				
Characteristic	1.1	Manufacturer (abbreviated description)				
	1.2	Manufacturer's type designation	ECE 310	ECE 310 HP		
	1.3	Drive	Electric			
	1.4	Operation	Order pickers			
	1.5	Load capacity/load	Q	kg	1000	
	1.6	Load centre distance	c	mm	600	
	1.8	Load distance, centre of drive axle to fork	x	mm	821	
	1.9	Wheelbase	y	mm	1925 2075	
	Weights	2.1.1	Service weight (incl. battery)	kg	1084	1274
2.2		Axle load laden front/rear	kg	839 / 1245	869 / 1405	
2.3		Axle load unladen front/rear	kg	772 / 311	862 / 411	
Wheels/suspension system	3.1	Tyres	PU			
	3.2	Tyre size, front	Ø 230 x 78			
	3.3	Tyre size, rear	Ø 75 x 95			
	3.4	Additional wheels	Ø 180 x 65			
	3.5	Wheels, number front/back (x=driven)	1+1x/2			
	3.6	Tread width, front	b ₁₀	mm	481	
	3.7	Tread width, rear	b ₁₁	mm	339	
	3.7.1	2. Tread width, rear		mm	379	
Basic dimensions	4.4	Lift (h ₃)	h ₃	mm	750	
	4.9	Height of tiller handle in drive position min./max.		mm	1374 / 1418	
	4.15	Height, lowered	h ₁₃	mm	90	
	4.19	Overall length	l ₁	mm	2471 2621	
	4.20	Length including fork shank	l ₂	mm	1321 1471	
	4.21.1	Overall width	b ₁	mm	810	
	4.22	Fork dimensions	s/e/l	mm	56 / 185 / 1150	
	4.25	Width across forks	b ₅	mm	520	
	4.32	Ground clearance centre of wheelbase	m ₂	mm	30	
	4.34.1	Aisle width (pallet 800x1200 length)	A _{st}	mm	2721 2871	
4.35	Turning radius	W _a	mm	2142 2292		
Performance data	5.1	Travel speed laden/unladen	km/h	11.5 / 14		
	5.2	Lift speed laden/unladen	m/s	0.17 / 0.33		
	5.3	Lowering speed laden/unladen	m/s	0.19 / 0.19		
	5.8	Max. gradeability laden/unladen	%	6 / 15		
	5.10	Service brake		generative		
E-motor/Electronics	6.1	Drive motor, performance S2 60 min	kW	3.2		
	6.2	Lift motor, performance with S3	kW	1.5		
	6.4	Battery voltage/nominal capacity	V / Ah	24 / 465		
	6.5	Battery weight	kg	370		
	6.6.1	Energy consumption according to EN cycle	kWh/h	0.47		
	6.6.2	CO2 equivalent as per EN 16796	kg/h	0.3		
	6.7	Throughput	t/h	68	67	
	6.8.1	Energy consumption with max. throughput	kWh/h	1.47		

Other	8.1	Type of drive control		AC
	10.5	Steering version		electric
	10.7	Sound level as per EN12053, operator's ear	dB (A)	62
<p>- This data sheet according to VDI guideline 2198 only states the technical values of the standard truck. Different tyres, other masts, additional equipment etc. may result in different values.</p>				

1) With XL battery compartment: 24 V / 620 Ah / 460 kg 2) With XL battery compartment = values + 118 mm 3) With option for extended operator position = values + 50 mm 4) Diagonal as per VDI = values + 94 mm 5) Values for battery compartment L, standard stand-on platform and fork length = 1150 mm

The German production facilities in
Norderstedt, Moosburg and Landsberg
are certified.

ISO 9001
ISO 14001

Jungheinrich fork lift trucks meet
European safety requirements.



 **JUNGHEINRICH**

The Jungheinrich logo, featuring a red upward-pointing arrow integrated into the letter 'J', followed by the brand name 'JUNGHEINRICH' in a bold, black, sans-serif font.