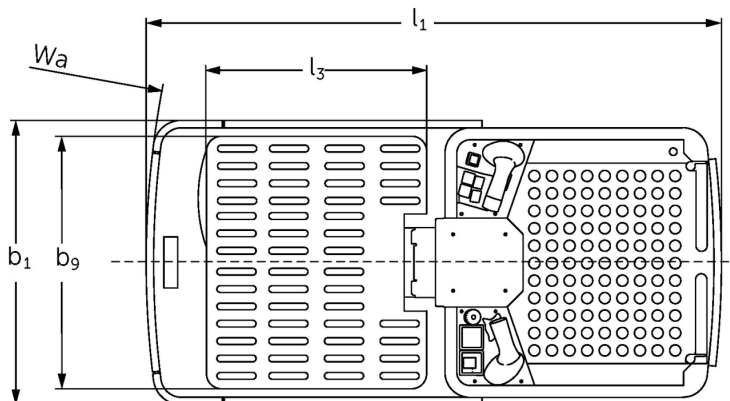
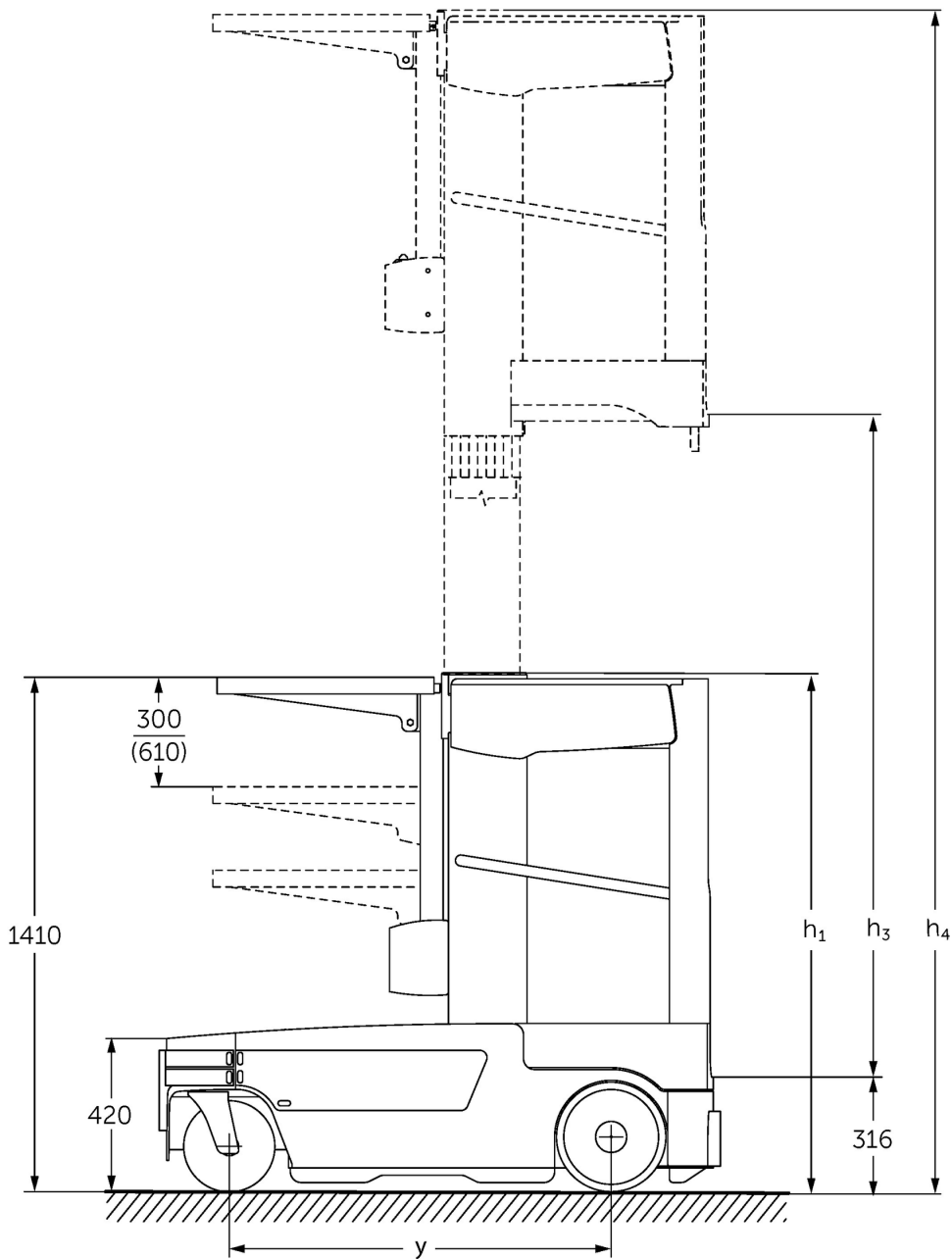




Small parts order picker **EKM 202**

Lift height: 3000 mm / Load capacity: 215 kg

EKM 202



VDI table

Stand-on: 10/2020

Characteristic	1.1	Manufacturer (abbreviated description)		Jungheinrich	
	1.2	Manufacturer's type designation		EKM 202	
	1.3	Drive		Electric	
	1.4	Operation		Order pickers	
	1.5	Load capacity/load	Q	kg	215
	1.9	Wheelbase	y	mm	1045
Weights	2.1	Service weight		kg	615
	2.3	Axle load unladen front/rear		kg	250 / 365
Wheels/ suspension system	3.1	Tyres			R + R
	3.2	Tyre size, front			Ø 250x50
	3.3	Tyre size, rear			Ø 300x65
	3.5	Wheels, number front/back (x=driven)			2/2x
Basic dimensions	4.4	Lift (h ₃)	h ₃	mm	3000
	4.8	Seat height/stand height	h ₇	mm	324
	4.14	Stand height, elevated	h ₁₂	mm	3324
	4.19	Overall length	l ₁	mm	1528
	4.21.1	Overall width	b ₁	mm	750
	4.32	Ground clearance centre of wheelbase	m ₂	mm	65
	4.35	Turning radius	W _a	mm	1250
	4.38	Order picking height		mm	5324
Performance data	5.1	Travel speed laden/unladen		km/h	8 / 8
	5.2	Lift speed laden/unladen		m/s	0.25 / 0.25
	5.3	Lowering speed laden/unladen		m/s	0.21 / 0.21
E-motor/ Electronics	6.1	Drive motor, performance S2 60 min		kW	1
	6.2	Lift motor, performance with S3		kW	2.2
	6.4	Battery voltage/nominal capacity		V / Ah	24 / 192
	6.5	Battery weight		kg	120
Other	8.1	Type of drive control			AC

- This data sheet according to VDI guideline 2198 only states the technical values of the standard truck. Different tyres, other masts, additional equipment etc. may result in different values.

The German production facilities in
Norderstedt, Moosburg and Landsberg
are certified.

ISO 9001
ISO 14001

Jungheinrich fork lift trucks meet
European safety requirements.



 **JUNGHEINRICH**

The Jungheinrich logo, featuring a red upward-pointing arrow integrated into the letter 'J', followed by the brand name 'JUNGHEINRICH' in a bold, black, sans-serif font.