

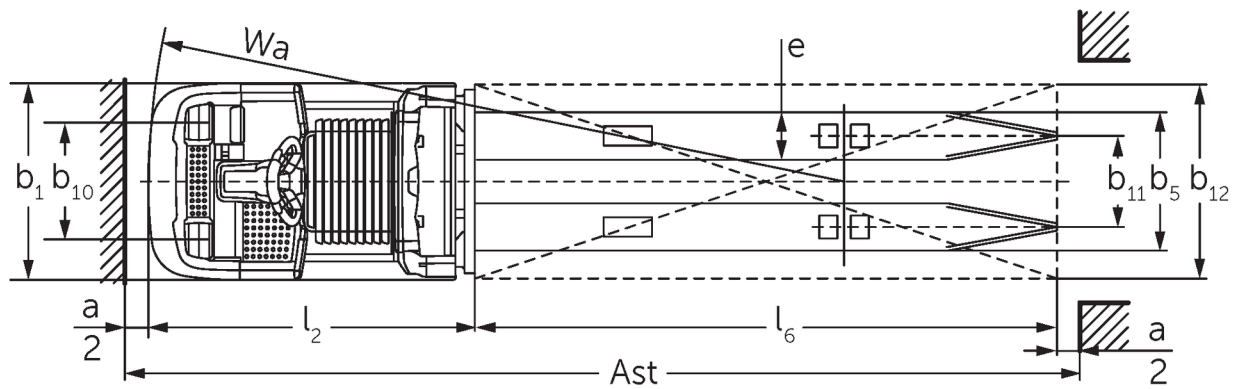
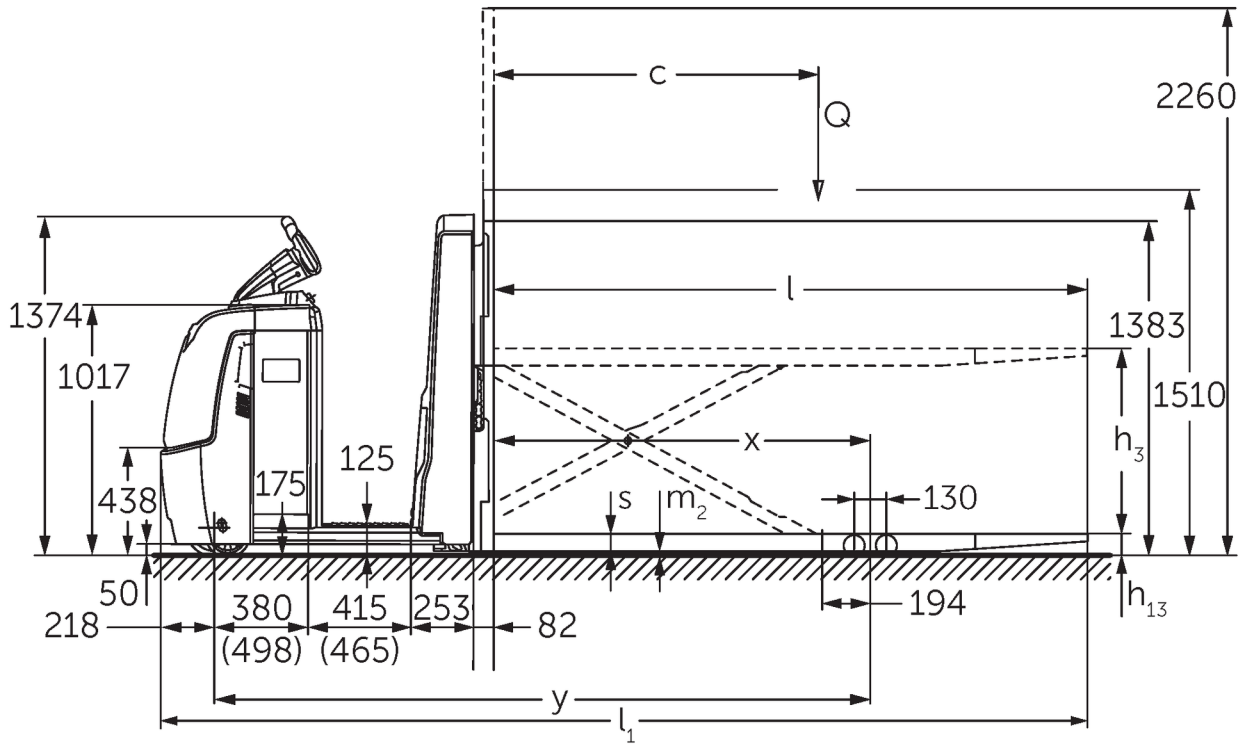


## **Low level order pickers**

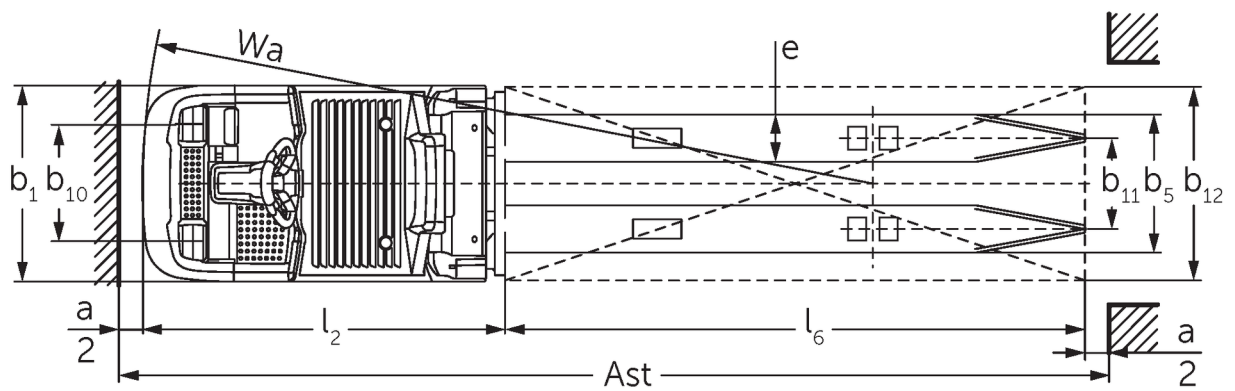
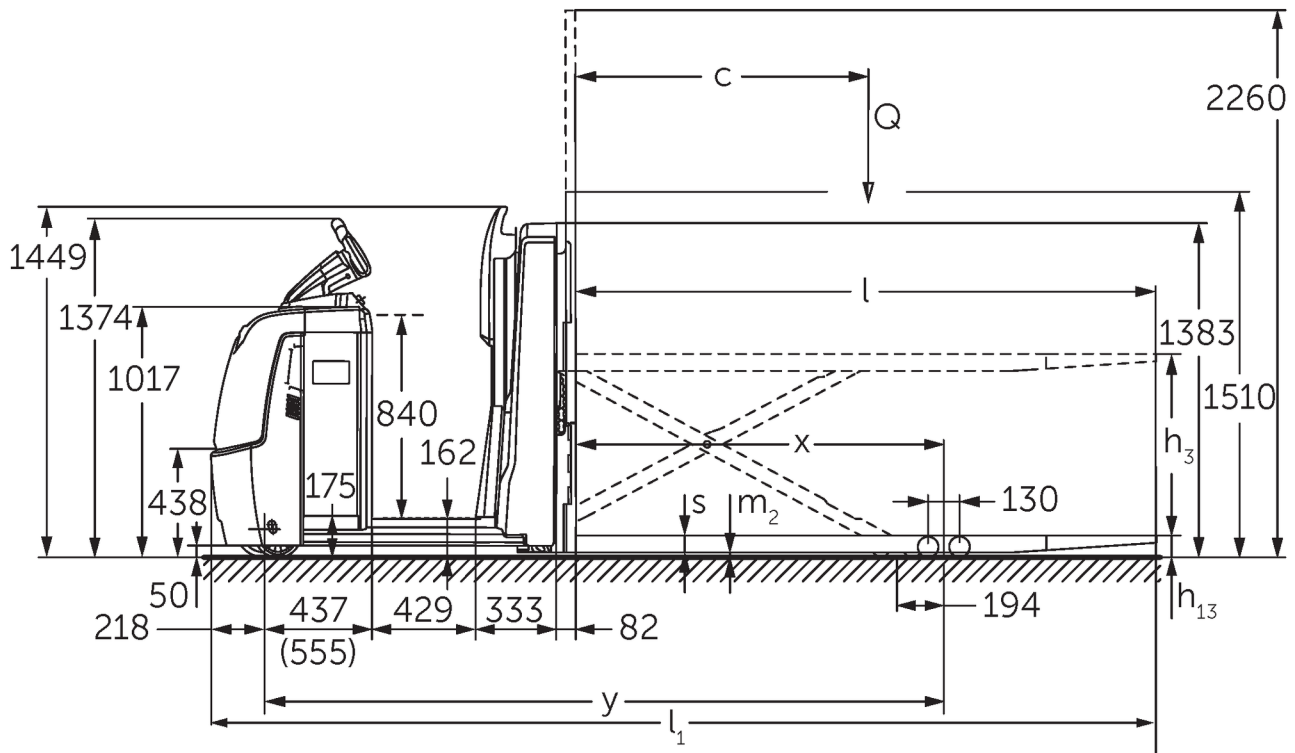
### **ECE 320**

**Lift height: 750 mm / Load capacity: 2000 kg**

# ECE 320



# ECE 320



# VDI table

Stand-on: 10/2020

				Jungheinrich	
Characteristic	1.1	Manufacturer (abbreviated description)		ECE 320	ECE 320 HP
	1.2	Manufacturer's type designation			
	1.3	Drive		Electric	
	1.4	Operation		Order pickers	
	1.5	Load capacity/load	Q kg	2000	
	1.6	Load centre distance	c mm	1200	
	1.8	Load distance, centre of drive axle to fork	x mm	1522	
	1.9	Wheelbase	y mm	2652	2803
	Weights	2.1.1	Service weight (incl. battery)	kg	1300
2.2		Axle load laden front/rear	kg	1120 / 2180	1240 / 2250
2.3		Axle load unladen front/rear	kg	900 / 400	1020 / 470
Wheels/suspension system	3.1	Tyres		PU	
	3.2	Tyre size, front		Ø 230 x 78	
	3.3	Tyre size, rear		Ø 85 x 85	
	3.4	Additional wheels		Ø 180 x 65	
	3.5	Wheels, number front/back (x=driven)		1+1x/4	
	3.6	Tread width, front	b <sub>10</sub> mm	481	
	3.7	Tread width, rear	b <sub>11</sub> mm	345	
	3.7.1	2. Tread width, rear	mm	375	
Basic dimensions	4.4	Lift (h <sub>3</sub> )	h <sub>3</sub> mm	750	
	4.9	Height of tiller handle in drive position min./max.	mm	1374 / 1418	
	4.15	Height, lowered	h <sub>13</sub> mm	90	
	4.19	Overall length	l <sub>1</sub> mm	3747	3897
	4.20	Length including fork shank	l <sub>2</sub> mm	1347	1497
	4.21.1	Overall width	b <sub>1</sub> mm	810	
	4.22	Fork dimensions	s/e/l mm	70 / 195 / 2400	
	4.25	Width across forks	b <sub>5</sub> mm	540	
	4.32	Ground clearance centre of wheelbase	m <sub>2</sub> mm	20	
	4.34.1	Aisle width (pallet 800x1200 length)	A <sub>st</sub> mm	3947	4097
	4.35	Turning radius	W <sub>a</sub> mm	2869	3019
Performance data	5.1	Travel speed laden/unladen	km/h	9.5 / 14	
	5.2	Lift speed laden/unladen	m/s	0.09 / 0.16	
	5.3	Lowering speed laden/unladen	m/s	0.11 / 0.11	
	5.8	Max. gradeability laden/unladen	%	6 / 15	
	5.10	Service brake		generative	
E-motor/Electronics	6.1	Drive motor, performance S2 60 min	kW	3.2	
	6.2	Lift motor, performance with S3	kW	1.5	
	6.4	Battery voltage/nominal capacity	V / Ah	24 / 465	
	6.5	Battery weight	kg	370	
	6.6.1	Energy consumption according to EN cycle	kWh/h	0.63	
	6.6.2	CO2 equivalent as per EN 16796	kg/h	0.3	
	6.7	Throughput	t/h	104	
	6.8.1	Energy consumption with max. throughput	kWh/h	1.72	1.78

Other	8.1	Type of drive control		AC
	10.5	Steering version		electric
	10.7	Sound level as per EN12053, operator's ear	dB (A)	62
<p>- This data sheet according to VDI guideline 2198 only states the technical values of the standard truck. Different tyres, other masts, additional equipment etc. may result in different values.</p>				

1) With XL battery compartment: 24 V / 620 Ah / 460 kg 2) With XL battery compartment = values + 118 mm 3) With option for extended operator position = values + 50 mm 4) Diagonal as per VDI = values + 94 mm 5) Values for battery compartment L, standard stand-on platform and fork length = 2400 mm

The German production facilities in  
Norderstedt, Moosburg and Landsberg  
are certified.

ISO 9001  
ISO 14001

Jungheinrich fork lift trucks meet  
European safety requirements.



 **JUNGHEINRICH**

The Jungheinrich logo, featuring a red upward-pointing arrow integrated into the letter 'J', followed by the brand name 'JUNGHEINRICH' in a bold, black, sans-serif font.