

Truck width of just 820 mm

Narrow aisle width

Ergonomic seating position

Three-phase AC technology

LION
technology



ESC 214/216/214z/216z

Electric sideways-seated stacker (1,400/1,600 kg)

The ESC 214/216 electric sideways-seated stackers are ideal for longer transport distances during stacking and retrieval. With a width of just 820 mm and a short working aisle width, the ESC shows particular strength in applications where space is limited and in block storage warehouses.

The comfortable sideways seating position provides the operator with excellent visibility. This is a great advantage, especially where frequent changes of direction are required. The individual height adjustment of the foot-well provides a relaxed work environment for operators of different heights.

Other advantages include:

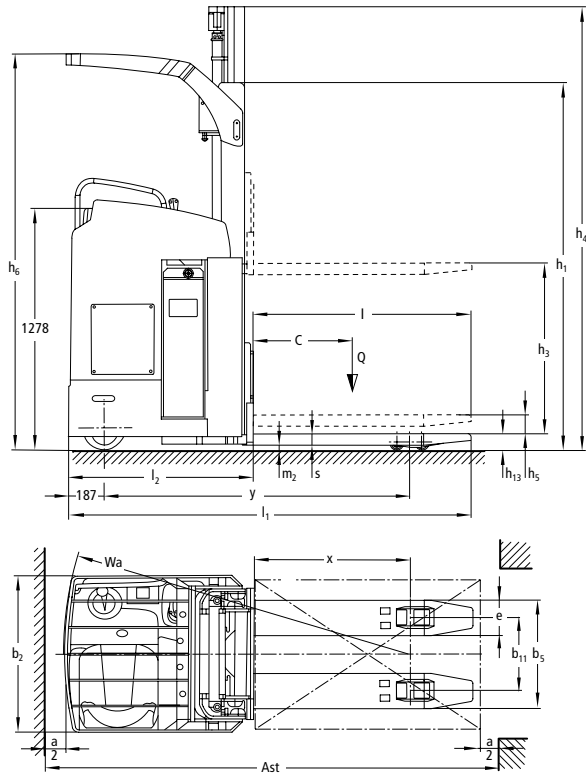
- Powerful, innovative 2.8 kW 3-phase drive motor for high acceleration and performance.

- High residual capacities and powerful lift motor.
- Extremely durable frame for exceptionally high operational demands.
- Display showing steering position and travel program selection (optional).
- Electric steering for easy manoeuvring with a few turns of the steering wheel.
- Low operating costs due to excellent energy management.

Thanks to its initial lift, the ESC 214z/216z is also able to cope effortlessly with uneven floors. All drive and lift functions are performed using the multifunctional lever within easy reach. Thanks to the compact design and excellent ergonomics, the ESC is the ideal stacker for working in restricted spaces.

JUNGHEINRICH

ESC 214/216/214z/216z



Standard mast designs ESC 214/216/214z/216z									
	Lift h_3 (mm)	Lowered mast height h_1 (mm)		Free lift h_2 (mm)		Extended mast height h_4 (mm)		Height of overhead guard h_6 (mm)	
		ESC 214 / 214z	ESC 216 / 216z	ESC 214 / 214z	ESC 216 / 216z	ESC 214 / 214z	ESC 216 / 216z	ESC 214 / 214z	ESC 216 / 216z
Duplex ZT	2800	-	1995	-	100	-	3372	-	2093
	2900	1995	-	100	-	3422	-	2093	-
	3100	-	2145	-	100	-	3672	-	2243
	3200	2145	-	100	-	3722	-	2243	-
	3500	-	2345	-	100	-	4072	-	2288
	3600	2345	-	100	-	4122	-	2288	-
	4000	-	2595	-	100	-	4572	-	2288
	4100	2595	-	100	-	4622	-	2288	-
	4200	-	2695	-	100	-	4772	-	2288
Duplex ZZ	2800	-	1945	-	1373	-	3372	-	2093
	2900	1945	-	1420	-	3422	-	2093	-
	3100	-	2095	-	1523	-	3672	-	2243
	3200	2095	-	1570	-	3722	-	2243	-
	3500	-	2295	-	1723	-	4072	-	2288
	3600	2295	-	1770	-	4122	-	2288	-
	4000	-	2545	-	1973	-	4572	-	2288
	4100	2545	-	2020	-	4622	-	2288	-
	4200	-	2645	-	2073	-	4772	-	2288
Triplex DZ	4200	-	1945	-	1376	-	4770	-	2093
	4300	1945	-	1426	-	4830	-	2093	-
	5250	-	2295	-	1726	-	5820	-	2288
	5350	2295	-	1776	-	5880	-	2288	-
	6200	-	2615	-	2046	-	6790	-	2288

Technical data in line with VDI 2198

		Jungheinrich						
		ESC 214	ESC 216	ESC 214z	ESC 216z			
Identification	1.1	Manufacturer (abbreviation)						
	1.2	Model						
	1.3	Drive		Electric				
	1.4	Manual, pedestrian, stand-on, seated, order picker operation		seat				
	1.5	Load capacity/rated load	Q t	1.4	1.6	1.4	1.6	
	1.6	Load centre distance	c mm	600				
	1.8	Load distance	x mm	860	860	874 ²⁾	874 ²⁾	
	1.9	Wheelbase	y mm	1,648	1,648	1,677 ²⁾	1,677 ²⁾	
	Weights	2.1.1	Net weight incl. battery (see row 6.5)		kg	1,590	1,590	1,660
2.2		Axle loading, laden front/rear		kg	1,316 / 1,674	1,340 / 1,850	1,285 / 1,775	1,370 / 1,890
2.3		Axle loading, unladen front/rear		kg	1,113 / 477	1,113 / 477	1,162 / 498	1,162 / 498
Wheels / frame	3.1	Tyres		Polyurethane				
	3.2	Tyre size, front		mm				
	3.3	Tyre size, rear		Ø 230 x 77				
	3.4	Additional wheels (dimensions)		Ø 85 x 85				
	3.5	Wheels, number front/rear (x = driven wheels)		Ø 140 x 126				
	3.6	Tread width, front	b ₁₀ mm	2-1x/4				
	3.7	Tread width, rear	b ₁₁ mm	544				
Basic dimensions	4.2	Mast height (lowered)		h ₁ mm	1,995			
	4.3	Free lift		h ₂ mm	100			
	4.4	Lift		h ₃ mm	2,900	2,800	2,900	2,800
	4.5	Extended mast height		h ₄ mm	3,422			
	4.6	Initial lift		h ₅ mm	0	0	125	125
	4.7	Height of overhead guard		h ₆ mm	2,095 ³⁾			
	4.8	Seat height/standing height		h ₇ mm	950			
	4.15	Height, lowered		h ₁₃ mm	90			
	4.19.4	Total length including fork length		l ₁ mm	2,125	2,125	2,140	2,140
	4.20	Length to face of forks		l ₂ mm	975	975	990	990
	4.21	Overall width		b ₁ /b ₂ mm	820			
	4.22	Fork dimensions		s/e/l mm	60 / 185 / 1,150	60 / 185 / 1,150	60 / 185 / 1,150	65 / 185 / 1,150
	4.25	Width across forks		b ₅ mm	570			
	4.32	Ground clearance, centre of wheelbase		m ₂ mm	30	30	25	25
	4.34	Aisle width for pallets 800 x 1200 lengthways		Ast mm	2,383 ¹⁾	2,383 ¹⁾	2,398 ¹⁾	2,398 ¹⁾
4.35	Turning radius		W _a mm	1,843	1,843	1,872 ²⁾	1,872 ²⁾	
Performance data	5.1	Travel speed, laden/unladen		km/h	9.1 / 9.1			
	5.2	Lift speed, laden/unladen		m/s	0.15 / 0.24	0.13 / 0.24	0.14 / 0.23	0.14 / 0.23
	5.3	Lowering speed, laden/unladen		m/s	0.42 / 0.42	0.42 / 0.42	0.42 / 0.38	0.42 / 0.38
	5.7	Gradeability, laden/unladen		%	7 / 12			
	5.10	Service brake		electric				
Electrics	6.1	Drive motor, output S2 60 min.		kW	2.8			
	6.2	Lift motor, output at S3 10%		kW	3			
	6.3	Battery as per DIN 43531/35/36 A, B, C, no		no				
	6.4	Battery voltage/nominal capacity K5		V/Ah	24 / 465			
	6.5	Battery weight		kg	380			
Misc.	8.1	Type of drive control		AC speedCONTROL				

¹⁾ Diagonal as per VDI: + 190 mm

²⁾ Load section raised: - 78 mm

³⁾ See mast table

Benefit from the advantages



Grab handle for safe access and for the fitting of various options



Comfortable seating position with height-adjustable floor plate on the ESE 220/320



Ergonomic layout of all controls



Excellent visibility through the mast

Innovative 3-phase AC technology

Better performance simultaneously combined with reduced operating costs. Advantages:

- High efficiency levels with excellent energy management.
- Powerful acceleration.
- Rapid direction change.
- No carbon brushes – maintenance-free drive motor.
- 2-year warranty on the drive motor.

Productivity-enhancing ergonomics

The arrangement of the operator workstation, sideways on to the direction of travel, ensures optimum visibility and reduces potential neck complaints due to frequent changes in direction. A safety switch in the foot-well ensures maximum safety. Other ergonomic characteristics are:

- Comfortable seat with adjustment for body weight.
- Padded armrest.
- Padded knee area.
- Grab handle for safe entry (also serves as the mounting point for storage or for a radio data terminal).

Comfortable and safe operation

Speed regulation with speedCONTROL impulse control system ensures maxi-

mum safety and simple travel speed control in all situations:

- Roll-back protection on gradients with automatically activated brake.
- Constant travel speed on gradients/descents.
- Energy recovery with regenerative braking.
- Particularly smooth stepless operation.

Easy operation and excellent all-round visibility

- Operation of all drive and lift functions by multifunctional lever within easy reach.
- Proportional hydraulics for precise load positioning.
- Smooth electric steering.
- Protected seating position within the enclosed truck profile.
- Excellent all-round visibility with no obstructive struts; good view through the mast and overhead guard.

Narrow truck with high manoeuvrability

- With a truck width of only 820 mm, the ESC is ideal for use in narrow aisles and block storage warehouses.
- Short working aisle width and well protected operator position for optimum operation in narrow working aisles.

Robustness and ease of servicing

- Easy access to the controller and electronics.
- Side opening to the drive compartment.
- Robust, enclosed frame.

Long operating times available with lead-acid battery

- Powerful battery with 3 PzS 465 Ah.
- Lateral battery exchange on rollers.

Additional equipment

- Various storage options.
- Heated seat.
- Load guard.
- Display (travel direction, steering setting, battery status, operating hours, time of day, travel programs).

Lithium-ion technology

- High degree of availability thanks to extremely short charging times.
- No battery exchange required.
- Cost savings due to longer service life and low maintenance compared with lead-acid batteries.
- No charging rooms and ventilation required as there is no build up of gas.
- Longer service life with 5-year Jungheinrich guarantee.

Jungheinrich UK Ltd.

Head Office:
Sherbourne House
Sherbourne Drive
Tilbrook
Milton Keynes MK7 8HX
Telephone 01908 363100
Fax 01908 363180

info@jungheinrich.co.uk
www.jungheinrich.co.uk

The German production facilities in Norderstedt, Moosburg and Landsberg are certified. **ISO 9001**
ISO 14001

Jungheinrich fork lift trucks meet European safety requirements.



JUNGHEINRICH